



Download on the
App Store



GET IT ON
Google Play

Made for



iPod



iPhone



iPad



IRIVER Live Stream

INSTRUCTION BOOK

Please read this instruction book carefully before
using the device.

IRIVER

CONTENTS

How to Use IRIVER Live Stream

Installing IRIVER Live Stream	03
Music Replay Screen	05
Search	08
Favorites	09
My Music	10
Streaming	16
Multi-room	17
Multi-channel	18
AirPlay	18
Cast Media to Device	19

Installing IRIVER Live Stream

Downloading IRIVER Live Stream

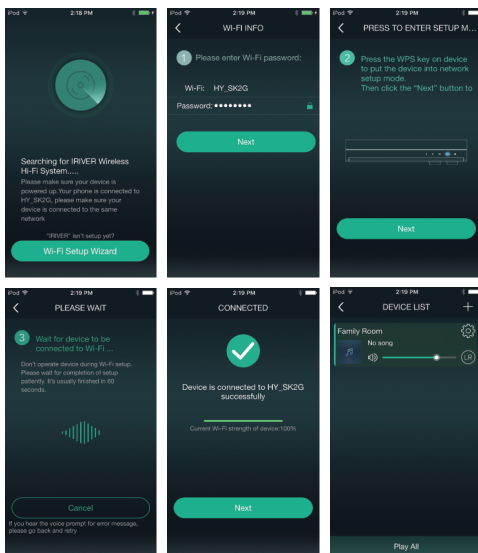
1. Please install the **[IRIVER Live Stream]** app by downloading it from the device's app store.

Connecting wireless network manually

1. Select **[Wi-Fi]** by turning the **[Power/Menu]** knob in front of the device.
2. Select **[LS150_XXXXXX]** on the Wi-Fi connection list of the device.
3. Once you enter **[10.10.10.254]** in the browser's address bar, **[LS150 Web Setup Menu]** will appear.
4. If you select the **[Wi-Fi]** tab, you will see a list of APs to which you can connect.
5. Select a desired **[AP]** to connect to the wireless network.
 - Additional information such as key index and network key may be required depending on AP settings.
6. You can change AP settings after selecting **[Revise Network]** by pressing the connected AP for a few seconds.

Connecting automatically using WPS

1. Please install the **[IRIVER Live Stream]** app by downloading it from the device's app store.
2. Select **[Wi-Fi Setup Wizard]** after executing **[IRIVER Live Stream]**.
3. Enter a password and press **[Next]**.
4. Press **[Pair/WPS/Scan]** on the upper side of the device, and press **[Next]**.
5. Once Wi-Fi network has been connected, you will see a message **[Device is connected to 00000 successfully]** on your device.
6. Once you press **[Next]**, IRIVER Live Stream will be executed.



Connection time may take longer depending on Wi-Fi network. For detailed instructions on how to use IRIVER Live Stream, please refer to the [IRIVER Live Stream] manual. You can download the IRIVER Live Stream manual book from [<http://www.iriver.com - SUPPORT - DOWNLOAD>]. Currently available streaming services include Spotify, TIDAL, QQMusic, vTuner and iHeartRADIO and the list of available streaming services may be expanded or curtailed in the future. For devices supporting DLNA, you can select devices indicated as [LS150_xxxxxx] on the Wi-Fi list or connect to the same network. Replay may not be smooth depending on device/computer or Wi-Fi network environment.

Music Replay Screen



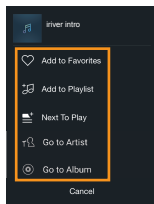
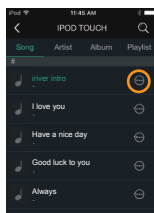
1	Music menu	Shows music menu.
2	Album art	Displays album art.
3	Favorites	Register/deregister a song on/from Favorites.
4	Progress bar	Indicates song's progress . Drag the progress indicator to move to the desired track time.
5	Song progress	Indicates song's duration.
6	Replay mode	Sets up the replay mode. <div> : Repeats the currently played song : Repeats the entire playlist currently played : Shuffles the entire playlist currently played </div>
7	Previous song	Replays the previous song.
8	Device list	Displays a device list.
9	Replay list	Displays the playlist currently replayed.
10	Play/Pause	Plays or pauses the current song.
11	Replay time	Indicates the song's total duration.
12	Volume	Turns the knob to adjust the volume of the sound.
13	Next song	Replays the next song.

Listening to Music


- If you slide the device to the right on replay screen, you can see the music menu. If you slide it to the left, you can see the device list.
- You can control the volume by pressing [🔊].
- Press [⏸] for pause and press [▶] for resume.
- Press [⏮/⏭] for replaying previous/next song.
- If you move the location of the progress bar while replaying, you can move to a location that you want to go.
- You can change the replay mode by pressing [🔄].
- You can see the music list currently played if you press [≡].
- You can register/deregister a song on/from Favorites by pressing [♥].

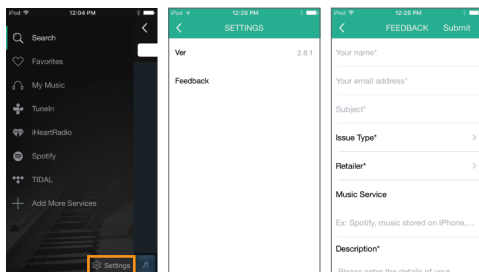
Other Functions

1. You can set up other functions by pressing [⋮] on the right side of the music list.
 - ♥ Add to Favorites: Stores songs you select on Favorites
 - 📁 Add to Playlist: Stores songs you select on Playlist
 - 🎵+ Next to Play: Adds a selected song to play after a song currently played
 - 👤 Go to Artist: Moves to a list of songs played by a singer you have selected
 - 📀 Go to Album: Moves to an album of songs you have selected



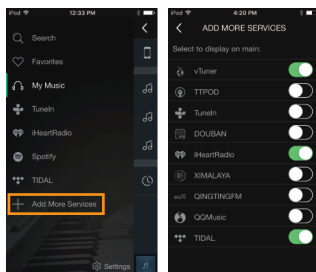
Setting up

1. You can set it up by selecting items of your choice after pressing [ **Settings**] at the bottom of the music list.
- Ver.: Shows the app version
- Feedback: Sets up your own information



Adding a streaming service

1. If you press [**+ Add More Services**] in the music menu, you can see the service list.
2. You can add/delete an item in the music menu by moving the service item's button of your choice.

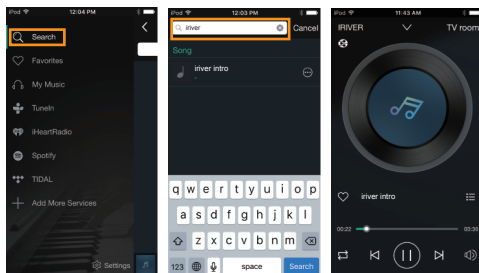


Search

You can search and replay songs of your choice through Search.

Searching for Songs

1. You can see a search box if you press [Q Search] on Music Menu.
2. If you enter a title/artist name for the song you want to look for, you will see a music list that includes search words of songs saved on your device.
3. Once you select a song, it will replay.

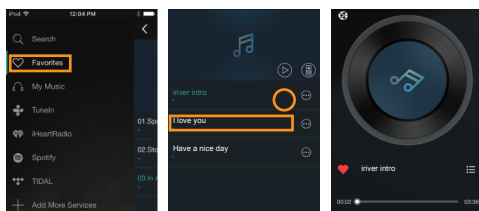


Favorites

You can replay all songs in your favorite song list by pressing Favorites ♡ .

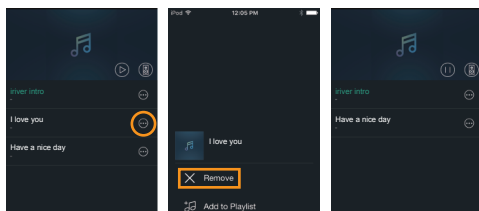
Viewing songs on Favorites

1. If you press [♡Favorites] in Music Menu, you will see a list of songs you have stored in your favorite song list.
2. All songs on Favorites will be replayed if you press [▶] on the upper side. A song will be replayed if you press the song.



Deleting a Song on Favorites

1. If you press [⋮ - X Remove] on the right side of the music list of Favorites, the song you have selected will be removed.

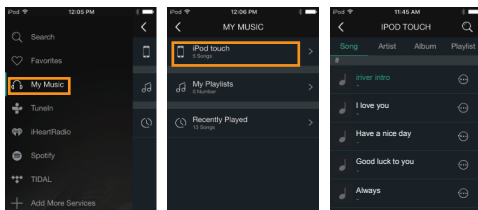


My Music

You can replay songs stored on your device/computer from My Music, manage the replay list, and view a list of songs you have recently listened to.

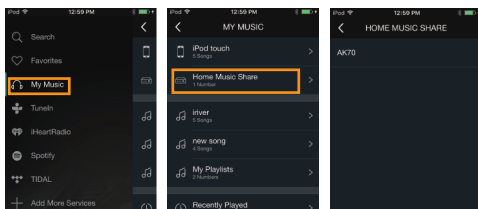
Viewing Songs on My Device

1. If you select [🔌 **My Device**] on [**My Music**] of the music menu, you will see a music list of the device.
2. Once you select a song, it will replay.



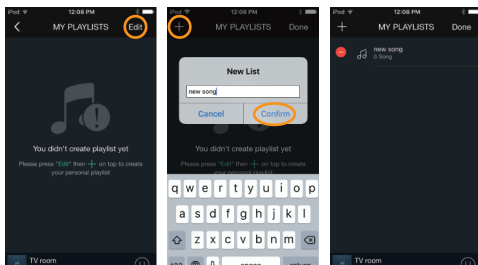
Home Music Share

1. If you select [🔌 **Home Music Share**] on [**My Music**], you will see a music list on all computers connected on the same network.
2. Once you select a song, it will replay.



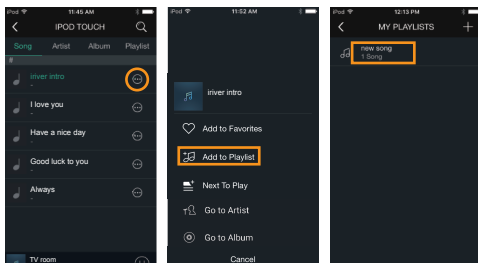
Creating Replay List

1. Select [**My Playlist**] on [**My Music**] in the music menu.
2. Press [**Edit - +**] on the upper side.
3. Add a name to the replay list and press [**Confirm**], and a new replay list will be created.



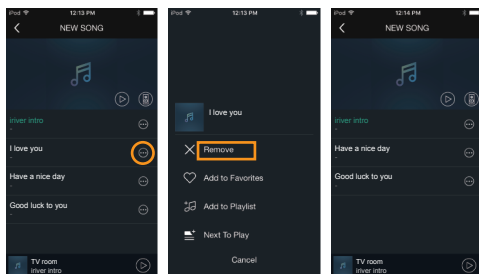
Adding a Song to the Playlist

1. If you press [**Add to Playlist**] on the right side of the song you want to add, a replay list will appear.
2. If you select a replay list that you want to choose, a song you have selected will be added to the replay list.



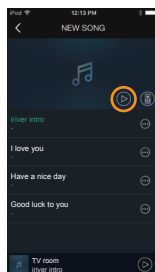
Removing a Song from the Playlist

1. If you press [⋮ - X Remove] on the right side of the music list to replay, the song you have selected will be deleted from the replay list.



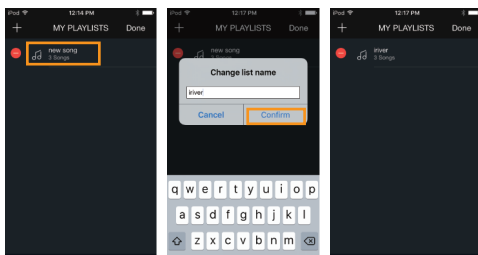
Replaying a Playlist

1. If you press [▶] on the upper side of the replay list, the replay list will be replayed.



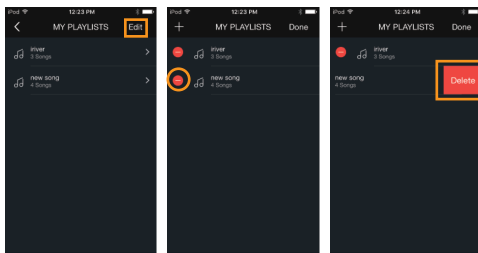
Renaming a Playlist

1. Select [🎵 **My Music - My Playlist**].
2. Once you press [**Edit**] on the upper side, select a replay list you want to change.
3. Enter a name to change and press [**Confirm**], and the changed name will be saved.



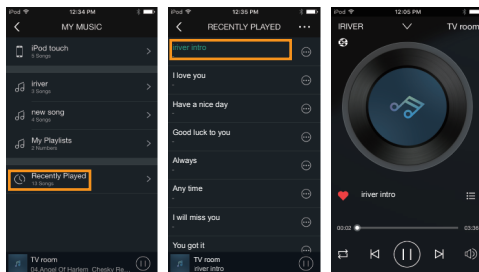
Deleting a Playlist

1. Select [🎵 **My Music - My Playlist**].
2. Press [**Edit**] on the upper side.
3. Once you press [⊖ - **Delete**] on the left side of the replay list you want to delete, the replay list will be deleted.



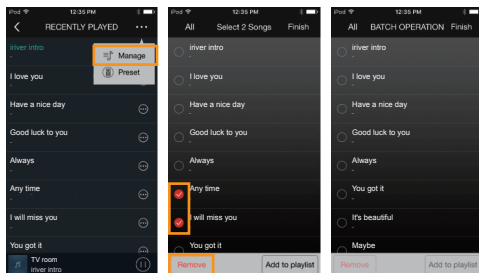
Music List Recently Replayed

1. If you select [**Recently Played**] on the music menu's [🔍 **My Music**], you will see a recently replayed music list.
2. Once you select a song, it will replay.



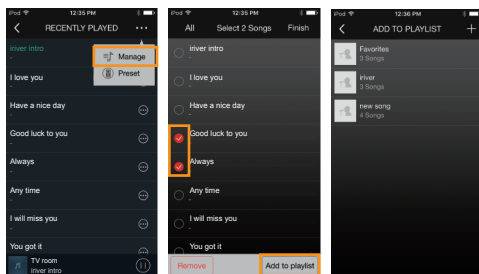
Deleting Recently Replayed Music

1. Select [**...** - **Manage**] on the upper side of the music list you recently replayed.
2. Select a song to delete and press [**Remove**] at the bottom, and the selected song will be deleted from the recently replayed list.



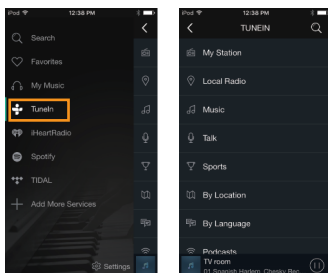
Saving Recently Replayed Song on Replay List

1. Select [**••• - Manage**] on the upper side of the music list you recently replayed.
2. Select a song to add and press [**Add to Playlist**] at the bottom, and a replay list will appear.
3. If you select a replay list that you want to choose, a song you have selected will be added to the replay list.



Streaming You can replay songs in real time by connecting to streaming services without the need for downloading music.

- **Spotify** : You can enjoy the streaming service by logging in to a Spotify account (www.spotify.com). Move to a connecting screen and select [Device] or [Family Room].
- **vTuner/TuneIn**: You can enjoy millions of online radio stations all around the world.
- **iHeartRadio** : You can take advantage of this Internet radio service providing programming of more than 800 radio stations.



Currently available streaming services include Spotify, TIDAL, QQMusic, vTuner and iHeartRADIO and the list of available streaming services may be expanded or curtailed in the future. For instructions on how to use each streaming service, refer to individual radio stations.

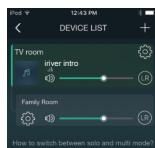
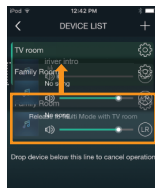
If the streaming service is provided through a fixed URL like Internet radio stations, music is replayed even after the app is terminated. When the connection is resumed through Wi-Fi, music is replayed by connecting automatically.

Multi-room

It allows multiple devices connected with IRIVER Live Stream on the same network to replay the same tune so that the listener can listen to stereo sound as if he were in a concert hall.

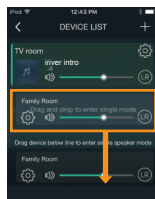
How to use Multi-room functionality

1. Device can be added automatically through WPS or manually.
2. You can replay the same music on different devices if you move to other devices to which you want to connect while pressing the Multi-room-enabled device on [Device List].



Lifting Multi-room functionality

1. You can lift the Multi-room feature if you move to an empty space on the screen while pressing the Multi-room-enabled device.



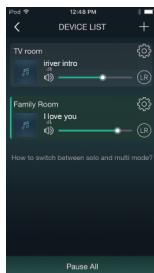
Performance can be limited depending on wireless network and device environment.
The multi-room functionality can support up to eight devices.
The multi-room functionality can support sound signals below 16 bits/48 KHz only.

Multi-channel

You can replay different songs by controlling a multiple number of devices on IRIVER Live Stream.

How to Use Multi-channel Functionality

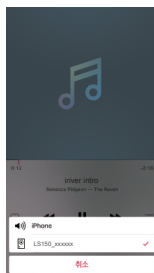
1. Device can be added automatically through WPS or manually.
2. You can replay by choosing different songs by pressing each device.



Airplay

Connecting AirPlay

1. Select **[Wi-Fi]** by turning the **[Power/Menu]** knob of the device and connect to the Wi-Fi network.
2. [📺] icon is displayed on the screen of music players on iPhone /iPod Touch/iPad connected to the same network.
3. If you select **[LS150]** after pressing [📺] icon, the music file is replayed through the speaker.



You can also connect AirPlay when the speaker is paired through Bluetooth with iPhone/iPod Touch/iPad.

Cast Media to Device

How to Use Windows 10 Cast Media to Device

You can stream songs on the computer by using the Cast Media to Device functionality of Windows 10.

1. Right-click an audio file on the computer and select **[Cast to Device - LS150_xxxxxx]**.
2. Once you see the Windows music player, you can start streaming songs.



If the song you want to replay through the Cast Media to Device functionality is connected on Multi-mode through the IRIVER Live Stream app, the functionality won't be supported.